



2022



**BARRENJOEY  
PARENT  
INFORMATION**







Barrenjoey High School is an integral part of a cohesive, artistic and creative community. As a progressive high school, we have developed a unique balance between creative excellence, academic achievement and social awareness. Barrenjoey is a school that recognises and celebrates excellence. Success is experienced in many pursuits and we are proud of the variety of opportunities provided for all students.

Our Vision is to consistently deliver quality education within a nurturing environment where we foster opportunities for students to excel in their individual areas of interest. Through community collaboration and partnership, Barrenjoey aims to develop respectful future citizens and leaders with self-awareness, pride, confidence and resilience who are active and lifelong learners.

The Parents & Citizens of Barrenjoey are highly involved with the school. They form an important part of the Barrenjoey community, underpinning the value 'relationships' hold in an area with such a strong sense of identity.

Barrenjoey aims to provide an individually tailored experience that is created from consistent processes and innovative strategies that are complemented through dynamic teaching practices. Barrenjoey aims to support the wellbeing of all students while consistently rewarding student effort, setting high expectations and promoting academic rigour.

Mark Robinson  
Principal



# CONTENTS

ATTENDANCE	4
BELL TIMES	5
TERM DATES	5
CURRICULUM	6
EXCURSIONS	8
EXTRA-CURRICULAR	9
DUKE OF EDINBURGH	10
FACILITIES	12
BARRENJOEY COMMUNITY	
PERFORMANCE SPACE	13
LEARNING HUB	14
FEES & VOLUNTARY SCHOOL CONTRIBUTIONS	15
HEALTH	16
HIGH SCHOOL TRANSITION	17
INFORMATION EVENINGS	18
PARENT / TEACHER / STUDENT EVENINGS	18
SUBJECT SELECTION INFORMATION	18
PARENTS & CITIZENS ASSOCIATION	19
PROGRAMS	20

REPORTS	22
SPORT	22
STAFF	24
STUDENT REPRESENTATIVE COUNCIL (SRC)	25
2022 STUDENT LEADERS	27
TRAVEL	28
UNIFORM	29
OTHER INFORMATION	31
WELLBEING	36

- Whilst we endeavour to have all facts and dates accurate at the time of printing, it is possible that variations will occur.
- Throughout this document the term parent will be used to denote parent, guardian or caregiver.

# ATTENDANCE

Punctuality and regular attendance are important habits that students need to develop in preparation for work and life in general and there is ample evidence that students who attend regularly and are punctual to all lessons are more likely to achieve their personal best in study. Latecomers, and those with irregular attendance, negatively affect the continuity of their learning. Latecomers also disrupt the lessons of their peers.

## Late Arrival & Absences

- Except in unavoidable circumstances, students are expected to arrive at school before the warning bell at 8.57am, at which time they proceed to their first class. Some senior classes start at 8am.
- Students who arrive late to school must report to the Front Office. Parents can explain lateness in person, via email, SMS or phone call. Late arrival without explanation will be recorded as unexplained.
- Attendance at school each day is required under NSW law. Parents are notified of student absences via SMS. Absences due to illness or other acceptable reasons should be explained by parent / carer within 7 days via SMS, email or written note to Front Office including the date, student's name, address, class, parent's telephone number and the date(s) of the absence.
- Absences not explained after seven days are recorded as unexplained.
- Every effort should be made by students to secure medical and dental appointments out of school hours.
- The school should be advised in advance of anticipated absences longer than 5 days, for example for an operation. The necessary paperwork can be collected from the Front Office.
- Approval for holidays and travel outside of school vacation periods is at the Principal's discretion following a submission of appropriate request documents received from the Front Office. Students can no longer be granted an exemption from school for holiday travel outside of school vacations; all such travel is recorded as leave and student attendance data will be reduced as a result. Parents are strongly advised to avoid using non vacation time for family travel.

## Early Leavers

- Students who need to leave school early should bring a signed permission note from their parent stating date, student's name, year, time of departure and reason.
- The note should be presented to the Deputy Principal assigned to their year group (Ms James – 8, 10 and 12. Mr Brown – 7, 9 and 11).
- Before leaving the school grounds students must sign out at the Front Office.
- Students will be issued with and will retain a Leave Pass. These passes are valid on the day and time of issue only.
- If students will be returning to school after an appointment, they are required to sign back in at the Front Office.
- If children are sick while at school, they must report to the Front Office in the first instance. We will assess the situation and contact parents accordingly.





## Attendance

Attendance at school will be taken in the first 5 mins of Period One.

## Bell Times

School begins with Period 1 at 9.00am. Seniors who have a zero period will begin at 8.00am. The day finishes at 3.10pm every day except Wednesday, when it finishes at 3.00pm.

Period	Mon, Tue, Thu, Fri			
1	9:00 - 10:10			
2	10:10 - 11:10			
Lunch 1	11:10 - 11:40			
3	11:40 - 12:40			
4	12:40 - 1:40			
Lunch 2	1:40 - 2:10			
5	2:10 - 3:10			

Wednesday			
Years 7, 11, 12		Years 8, 9, 10	
1	9:00 - 10:05	1	9:00 - 10:05
2	10:05 - 11:00	2	10:05 - 11:00
Lunch 1	11:00 - 11:30	Lunch 1	11:00 - 11:30
3	11:30 - 12:30	3	11:30 - 12:30
4	12:30 - 1:30	Lunch 2	12:30 - 1:00
Lunch 2	1:30 - 2:00	Sport	1:00 - 2:30
5	2:00 - 3:00		

## Term Dates 2022

### Term 1 28 January – 8 April

Friday 28 January	Staff Development Day
Monday 31 January	Staff Development Day
Tuesday 1 February	Years 7, 11 & 12 Students Return
Wednesday 2 February	All Students Return

### Term 2 26 April – 1 July

Tuesday 26 April	Staff Development Day
Wednesday 27 April	Students Return

### Term 3 18 July– 23 September

Monday 18 July	Staff Development Day
Tuesday 19 July	Students Return

### Term 4 11 October – 20 December

Tuesday 11 October	Students & Staff Return
Tuesday 20 December	Staff Development Day

# CURRICULUM

## Year 7

Students follow a core curriculum:

- English
- Mathematics
- Science
- ICT Skills
- Geography
- History
- Music
- PDHPE
- Sport
- Technology
- Visual Arts

Students in Year 7 are involved in integrated sport while students in Years 8 to 10 participate in Sport on Wednesday afternoon

## Year 8

Students follow a core curriculum:

- English
- Mathematics
- Science
- History
- Geography
- Languages
- Music
- PDHPE
- Sport
- Technology
- Visual Arts

**Year 9 Electives may include (in addition to the core curriculum):**

- Ceramics
- Commerce
- Design & Technology
- Drama
- Elective History
- Food Technology
- French
- Industrial Technology - Engineering
- Industrial Technology - Multimedia
- Industrial Technology - Timber
- iSTEM
- Music
- PASS - Fitness and Promotion
- Photographic and Digital Media
- Textiles Technology
- Visual Arts

Barrenjoey students benefit from a close partnership with TAFE NSW Institutes.

TAFE links allow senior students to study specific TAFE Vocational Education and Training (TVET) courses as part of the curriculum.





## Year 10 Electives may include (in addition to core curriculum)

- Accelerated - Aboriginal Studies
- Accelerated - Drama
- Commerce
- Design & Technology
- English Advanced
- English Standard
- French 2
- Hospitality Certificate 1 Food & Beverage
- IT - Engineering\*\*
- IT - Multimedia
- IT - Timber One\*\*
- IT - Timber Two
- Marine & Aquaculture Technology
- Music
- PASS - Australia's Sporting Identity and Coaching
- PASS - Surfing
- Photographic & Digital Media\*\*
- School of Languages
- Science, Technology, Engineering & Mathematics
- Textiles Technology
- Visual Arts
- Visual Design
- Drama - Developing your Craft

## Years 11 and 12 Subjects may include (in addition to English):

- Ancient History
- Biology
- Business Studies
- Chemistry
- Community and Family Studies
- Construction (VET)
- Design & Technology
- Drama
- Earth and Environmental Science
- Economics
- Engineering Studies
- English Advanced
- English Extension 1
- English Standard
- English Studies
- Food Technology
- French Beginners
- French Continuers
- Geography
- Hospitality Kitchen Operations(VET)
- Industrial Technology-Multi Media
- Industrial Technology-Timber
- Investigating Science
- Investigating Science (Accelerated)
- Legal Studies
- Marine Studies (Non ATAR)
- Mathematics Advanced
- Mathematics Extension 1
- Mathematics Standard (Pathway 1)
- Mathematics Standard (Pathway 2)
- Modern History
- Music 1
- Music 2
- No, I don't want an ATAR
- No, I won't be applying for TAFE
- PD/H/PE
- Photography, Video & Digital Imaging (Non ATAR)
- Physics
- Society & Culture
- Sport Lifestyle & Recreation Studies (Non ATAR)
- Studies of Religion
- Studies of Religion (Accelerated)
- Textiles & Design
- Visual Arts
- Visual Design (Non ATAR)

# EXCURSIONS

Excursions are designed to supplement and enrich the students' learning. They are planned and organised by Head Teachers and their staff and are approved by the Principal. All excursions require a special consent form, which will be sent home for parents to sign and return. A Walking Excursion form is to be signed and on file for each student. This allows teachers to take the students for small excursions within a specified area around the school environs during lessons.

School uniform must be worn on excursions. On the rare occasions where students may wear non uniform this will be clearly stated on the excursion information note. Students involved in extra-curricular activities such as band, debating, charitable collections, public speaking and sporting competitions are required to wear school uniform. All travelling costs for excursions and other school activities are the responsibility of students and their parents.

## Camps

Camps are a part of the Barrenjoey curriculum and are planned and administered in accordance with Department of Education policy on excursions.

The camps are organised to be an integral part of the students' learning program and are held in Years 7, 9 and 11. All students are expected to participate in their year group camp.





# EXTRA-CURRICULAR

## Band

The Band Program at Barrenjoey High is one of the best high school band programs on the Northern Beaches, providing an enriching musical experience in which students are keen to engage, and where parents and the School are proud to claim ownership of a lively and successful music program, linking the school to the community and its feeder schools.

The Band Program is led by a professional conductor in collaboration with a School Liaison Teacher and an active parent Band Committee.

All Band members perform in our Concert Band; but depending on ability and demand, other ensembles may cater for students with an interest in jazz, big bands or busking.

We perform externally at community events such as Anzac Day, Avalon Tattoo and Avalon Market Day; support school functions such as assemblies, talent nights and information evenings; and showcase our talents at major external events such as the Northern Beaches Music and Jazz Festivals. We may also workshop with other high school or professional ensembles. The quality of our Band program may be measured by the fact that twice in the last four years we have been invited to play in the prestigious Gala Performance at the conclusion of the Northern Beaches Music Festival.

Our annual Tour is a highlight for Band, and the teachers and parents who accompany us. Wonderful music is performed with host schools and at community venues, and together with the travel involved, the tour provides a fun and rewarding experience, helping to forge supportive friendships between Band members across all years.

We have quality intermediate and semi-professional instruments available for hire to any Band member.

If you wish to register your interest in joining Band, or if you have any questions about fees or instruments, please email the Head Teacher CAPA – Fiona Gudmunson.





## Competitions

The school regularly participates in state and national competitions. English, mathematics, science, design and technology, computing, language, photography and other competitions are run at the school and all students are encouraged to take part. Certificates from these competitions make a valuable addition to a student's portfolio when seeking post school educational or employment placement. In addition, students are given opportunities to enter local competitions and exhibitions in a variety of subjects.

### 2022 UNSW International Competitions and Assessments for Schools (ICAS)

Digital Technologies  
Science  
Writing  
Spelling  
English  
Australian Mathematics Competition  
ICAS Mathematics

## Dance

Barrenjoey High School has a strong tradition of dance excellence. Students are involved in many outside events such as the Northern Sydney Dance Festival. Dance students regularly feature at school events such as MADD Night and special concerts held during the year.

The Barrenjoey Dance Ensemble rehearses for one hour a week. Being an extra-curricular activity a fee will be incurred. This covers a professional dance instructor and costumes. For information about dance, including costings, please call the School Treasury or the Mikala Yakich in the PDHPE Department.

## Art After School

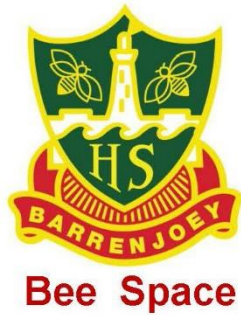
Art-After-School in 2022 will be open for interested students in Yrs 7–10.

The Ceramics-After-School course will explore hand building and decorative techniques suitable for beginners to advanced.

The Photography-After-School course, facilitated by our Artist in Residence, will explore digital photography, wet photography and film.

A material cost will be charged.





## Bee Space – Bees at Barrenjoey

Barrenjoey has two Warre Hives. Invented by a French monk in the 1950's, the hives are designed to mimic the natural tree cavity that a Bee colony would inhabit. The hives have top bars in each box that can be removed for inspection.



The Bee yard is new to the school and in 2022 we are looking forward to introducing interested students to the basics of beekeeping with view to our first harvest at the end of the year.

## DUKE OF EDINBURGH'S AWARD SCHEME

The award scheme is designed as a non-competitive, voluntary program of adventurous, practical and physical activities and community service. These activities provide students with the opportunity to acquire and develop skills, initiative and self-esteem which will help them to become more confident members of the community. The program offered at Barrenjoey High is designed to challenge each student to achieve at a level that they are capable of but they will have to show commitment and perseverance to succeed. As a result they will gain a great sense of achievement and personal satisfaction when they complete each level.



The scheme has three award levels: Bronze, Silver and Gold. To obtain each level, students must complete the following sections: Expeditions (2 trips travelling and exploring - one night for Bronze, two nights for Silver and three nights for Gold), Skills, Physical Recreation and Service.

It is the willingness of participants to challenge themselves in each of the above sections that has led to the recognition of the scheme in the wider community. The scheme is supported and coordinated in NSW by the State Awards Office and the scheme is also recognised on national and international levels.

- Bronze Award - Year 9 (14 years of age and over)
- Silver Award - Year 10 (15 years of age and over)
- Gold Award - Year 11/12 (16 years of age and over)



Students can start in Year 9 at the Bronze level. The school will provide students with all the training that is required and organise/run the expeditions, and each student is responsible for organising the completion of their other sections. The school will advise students on how to go about this and suggest activities that they may wish to undertake. At the completion of the Bronze level, students will be able to go on and complete the Silver and Gold levels at the school.

Expeditions are organised and attended by the teachers but are run by an adventure education company. Students are required to organise their own clothes, food and sleeping bag, the remainder of the equipment is supplied.

For further information on the award contact the school coordinator Richard Ilsley, the Award leaders for 2022 are –

- **Bronze and Silver** –Richard Ilsley
- **Gold** - Michael Moylan



# FACILITIES

## Canteen



The Canteen is managed by a sub-committee of the P&C and has paid supervisors who work with parent volunteers to provide delicious, varied and wholesome fresh food for the students at a moderate cost. The committee meets regularly and, in conjunction with the P&C, is responsible for all management policies.



**Volunteers** are always needed and very welcome. If you are available to help in the Canteen please telephone Susie Burns on 9918 8811.

Our Canteen complies with the NSW Government Healthy Schools Canteen policy. All profits from the school canteen go towards buying educational equipment for the school, so your support is greatly appreciated.

Flexischools is a fast and secure way to order and pay for lunches at the school canteen. Flexischools allows for recurring ordering or one off

orders. Go to [www.flexischools.com.au](http://www.flexischools.com.au) and follow the links.

The Canteen is open from 8.00am. Juniors **cannot** be served during class time.

## Computer Rooms



There are two computer rooms in the school. One is available for all faculties to use. The other is a specialised room for the TAS faculty that houses 2 x 3D printers, laser cutter and subject specific software. Students can access the computer facilities in the Learning Hub during breaks throughout the day and after school. The Senior Study area located in the Learning Hub has desktop computers and laptops for exclusive senior use.



The school is wirelessly networked as well as cabled and internet access is readily available to students via the monitored and controlled Department of Education's portal. The Barrenjoey High School Computer/Internet Acceptable Use Policy and Network Access Information are issued to all students on enrolment and students and parents are required to sign an agreement for appropriate use before the student is given network access.

## Hall / Gymnasium

The Hall is used for sport, assemblies celebrating student achievement, examinations, student performances and other school functions and is available for hire by the community.

It has a full sized indoor basketball court and is equipped for dance and drama. There is a large stage, equipped with an excellent sound and lighting system and a baby grand piano. The 'back stage' area is designed to be used for exhibitions of students' works in art, photography, design and technology, textiles and design.



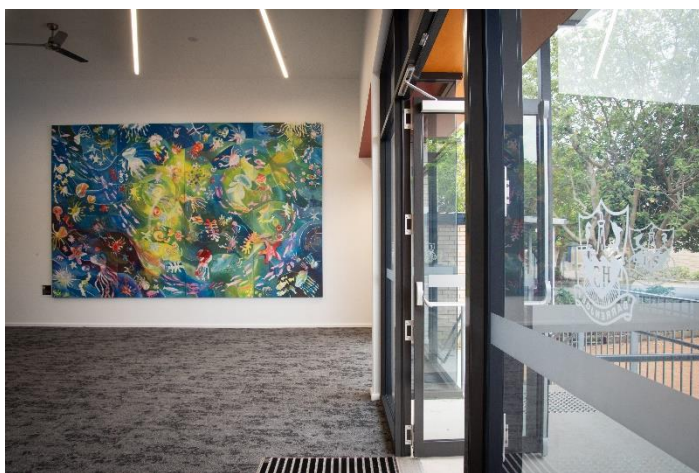
# BARRENJOEY COMMUNITY PERFORMANCE SPACE

Barrenjoey completed the build of the Barrenjoey Community Performance Space (BCPS) in 2019. Barrenjoey has always recognised the unique artistic and creative talent of its local community and has created multiple platforms where students can showcase those talents. The wider community can experience high quality art exhibits, drama and musical performances.

The BCPS is a purpose built, architecturally designed theatre boasting state of the art audio visual equipment with tiered seating for 195 people and an art gallery space. The building supports the vision of the school to better showcase the talents of our students and the wider community.

The exciting part of this build is the genuine support from all areas of the community and the benefits it will provide to the school and the wider community are enormous as it will further support the development of our exceptionally talented performing artists, musicians and community groups.

When you enter the BCPS, please enjoy the mural completed in November 2019 by our Year 7 Extension Class.



# LEARNING HUB

Barrenjoey High School's Learning Hub caters for the educational and leisure needs of the students and staff. The Learning Hub is currently updating its collections creating a rich, engaging collection of fiction, non-fiction, graphic novels, manga, magazines and periodicals in a variety of formats. This includes a subscription to Wheelers ePlatform which offers a collection of ebooks and audio books to students and staff. The e and audio book collection can be accessed directly through a link on Oliver; the Learning Hub catalogue's home page, or through the free Wheelers ePlatform app. Students access the ePlatform app using their DET login details.



Online access to Oliver, the school Learning Hub catalogue, makes the Learning Hub catalogue available to students and staff in and out of school time. A link to Oliver can be found on Sentral or the students' DET portal. Students are able to browse the Learning Hub catalogue, access the ebook collection, check the status of their loans, make reservations and review books. The Oliver homepage also provides access to online periodical subscriptions and direct links to Trove, the State Library of NSW, the Northern Beaches Library, HSC resources and the Online Referencing Generator.

In 2019 Barrenjoey High School forged close ties with the Northern Beaches Libraries. All Barrenjoey students are asked to have a membership with the Northern Beaches Library. Membership gives our students access to valuable resources to be used for school research tasks. Direct links to Britannica Online and the Ebsco academic databases can be found on the Oliver home page. A link to joining the Northern Beaches Library can also be found here.

The Learning Hub is open from 8:00am, Lunch 1 and 2. The teacher-librarian is available to assist students with using the library catalogue and accessing online resources, using data bases, compiling bibliographies, book selection and printing.

The Learning Hub also has a subscription to Clickview Online which offers thousands of videos designed to support the curriculum and engage students. All students and staff have access to Clickview, allowing students to access the Clickview library from home for research, homework and assessments. The Clickview Library offers 2,500+ curriculum related videos to help improve the learning outcomes at Barrenjoey High School.

Senior students have access to the Senior Study Room which is annexed to the Learning Hub. Senior Study lessons are incorporated in their timetables and are staffed by experienced teachers who are available to review students' assignments and classwork as well as to provide valuable feedback. The Teacher Librarian is also available to help with all research, academic presentation skills, course and personal reading suggestions.



We look forward to seeing you in your Learning Hub soon!

## Senior Study Room

This area is a facility for Senior students which is located in the back of the Learning Hub. The aim of the Senior Study is to improve the academic outcomes for senior students of Barrenjoey High school. This creates a strong learning culture by promoting high expectations, increased engagement and supporting individualised learning. The Senior Study Room (SSR) provides a unique learning environment in a dedicated room delivering technological accessibility, and staff expertise.

A staff member permanently staffs the Senior Study Room and offers assistance to students with study techniques, assessment enquiries and general motivational needs. The aim is to create an adult learning environment where students can access the resources that will specifically address their individual needs. An environment such as this requires students to be motivated, serious and mature and develop independent learning skills that will be modelled to all those around.



# FEES & VOLUNTARY SCHOOL CONTRIBUTIONS

Fees and Voluntary School Contributions are utilised to support six key learning areas:

- Subject Specific Materials
- Administration
- Technology
- Learning Hub
- Building Projects
- the Environment.

These contributions help create the best learning opportunities that Barrenjoey High School can provide. All subjects require a fee to be paid and a current list of those fees is available from the Treasurer's Office or on the back of your Term Invoice. Statements are issued on a term basis outlining outstanding amounts.

Fees may be paid in full in Term 1 or alternatively by instalments throughout the year. Should parents be experiencing hardship they are encouraged to apply to the Principal for Student Assistance Scheme funding support. Application forms are available from the Treasurer and as funding is limited early application is advised.



## Barrenjoey High School Fee List

2022

Year	7	8	9	10	11	12
<b>Administration &amp; PCS Levy</b>	25	25	25	25	25	25
<b>Subject Fees</b> (See reverse for details)	490	\$520	315	315	175	205
<b>Family Contribution</b> (invoiced to youngest child ONLY)	270	270	270	270	270	270
<b>Electives (number studied)</b>	0	0	2	2	5	.4/5
Aboriginal Studies-accelerated Yr10 students				50		
Ancient History					50	50
Business Studies					50	50
Community & Family Studies (CAFS)					50	50
Commerce			50	50		
Design & Technology					100	100
Drama			60	60	60	60
Economics					50	50
Engineering Studies					50	
Food Technology			160			
Geography					50	50
Industrial Tech -Timber			110	110	110	110
Industrial Tech - Engineering			100			110
IT Multi Media			90	90	90	90
iSTEM			55	55		
Investigating Science - accelerated Yr10 students					55	
Language Perfect-French only			30			
Language - French			40			
Legal Studies					50	50
Mathematics & Standard Maths					55	55
Modern History			50		50	55
Music			60	60	60	60
PASS - Physical Activity & Sport Studies/Surf			50	50		
PD/H/PE 2 unit					50	50
PDHPE/SLR-Sport Lifestyle Recreation					50	50
Photography/Digital Media (PDM)						90
Physics & Chemistry					55	55
Science-Biology/Marine Studies/Earth & Environmental				55	55	55
Society & Culture					50	
Studies of Religion					50	50
Textile Technology			100	100		100
VET-Construction					110	110
VET-Hospitality-Commercial Cookery (uniform required)					200	170
VET-Food & Beverage-Cert 1 (uniform required)				160		
Visual Arts			80	80	80	80
Yr 11/12 Extension (per unit)					30	30

\*\*Fees are payable in full in Term 1 or by term instalments - statements are mailed to parents at the beginning of each term.



## Lockers

All lockers are allocated on payment of a fee. Students are required to pay a one off fee of \$110 and come with a school provided lock. Students then keep the same locker for their school career. Students should visit lockers in their breaks, not in class time. For information about obtaining a locker see the Treasurer.

## HEALTH

It is important that the school staff are made aware of any physical disabilities or health problems that students may suffer e.g. anaphylaxis, asthma, heart trouble, respiratory complaints, diabetes, co-ordination problems, limb weaknesses, epilepsy etc so that special provision can be made for these students where necessary, and also so that the staff will know how to react if any emergency arises. The Principal will notify the relevant staff. This information can be made available during the enrolment process or at other times that any issue arises.

Parents should notify the Principal in writing of disabilities, injuries or health problems, which may impact participation in school activities such as sport or physical education. The Excursion and Sport Permission Notes have a section about medical requirements for parents to complete.

## Anaphylaxis

“Anaphylaxis is a severe and sudden allergic reaction. It can occur when a susceptible person is exposed to an allergen (such as food or an insect sting). Reactions usually begin within minutes of exposure and can progress rapidly over a period of up to two hours or more. Anaphylaxis is potentially life threatening and always requires an emergency response.” (*DET Guidelines for Schools*)

We have several students who have been diagnosed by their doctors as Anaphylactic. As part of the DET policy, all staff undertake regular training in anaphylaxis.

Please advise the Front Office if your child is diagnosed as Anaphylactic and provide an Action Plan and an EpiPen.

## Sick or Injured Students

Sick or injured students should obtain a note from their teacher before leaving the room and report to the Front Office for attention. Parents are notified when their child is ill or injured. The DET covers the costs for ambulance but medical attention is the responsibility of parents.

Students should not come to school if they are sick. It is essential that parents provide the school with a daytime phone contact in case of emergencies.



# HIGH SCHOOL TRANSITION

The Induction Program plays a major role in welcoming Year 7 students to the school. Trained volunteer students act as mentors and introduce positive peer influence to Year 7. This helps Year 7 to integrate more easily into the school and to build friendships with others in their year. Each Year 7 student will have an older friend in the wider school community.

The Induction Program is part of a well-planned transition from Year 6 to Year 7 that ensures all Year 7 students settle into their secondary education feeling confident, respected, cared for and welcome.

An Information Night is held for parents of **Year 6** students who have enrolled for the following Year 7. Senior student leaders, the Year 7 Advisor and senior staff members outline aspects of the school in relation to Year 7 such as wellbeing, curriculum, uniform, special programs and events on Orientation Day, the mentor program, day 1 and term 1 of high school.



## INFORMATION EVENINGS

### Open Nights

The school's annual Open Night is intended for prospective and current parents to showcase student learning in all subject areas.

Open Night for 2022 is  
Tuesday 1<sup>st</sup> March.



## PARENT / TEACHER / STUDENT EVENINGS

A Parent / Teacher / Student Evening is held every year for each year group. All parents are urged to attend this function to meet the teaching staff and to discuss their child's academic progress. Students are encouraged to attend these meetings to discuss their progress. Bookings are done online. Parents are emailed links and passwords closer to the relevant dates.

**2022 Parent / Teacher / Student Schedule:**  
**Year 7 – 12 TBC**

**Parents are welcome to contact the school at any time during the year to discuss their child's progress** or any problems which may arise. To ensure that the appropriate member of staff is available parents should ring the school (9918-8811) to make an appointment. In most cases the best person to call is your child's Year Advisor. Head Teachers of faculties should be contacted about questions related to a particular subject.

## SUBJECT SELECTION INFORMATION

Subject Selection Information evenings are held for parents and students of **Years 8 & 10** to help make subject choices for the School Certificate and Higher School Certificate courses. Information is also provided about NSW Education Standard Authority (NESA) assessment procedures and course pattern requirements at these evenings. Our Careers Advisor is always available by appointment to discuss subject selection and preparation for tertiary study, traineeships and careers.



# PARENT & CITIZENS ASSOCIATION

The **P&C** supports the school by providing more and better equipment and resources for the benefit of all students, discussing educational issues, school policies and improving the school grounds and facilities.

**P & C meetings are held at 5.30pm in the Staff Common Room on Wednesday evenings in Weeks 4 and 8 of each term.**

Please note these dates can change from time to time

The P&C and the school regularly organises **social events for parents** such as the welcome to new parents and the P&C Christmas party. A celebratory dinner for parents and student leaders is organised as part of the senior leaders' program. Parents are encouraged to participate in a **variety of events** such as the senior leaders' annual fund raiser and graduation and achievement ceremonies.

The garden and grounds **Bushcare** group regularly works on the school gardens and assists the coordination of major environmental projects. Working Bees are held each term. If you are able to help with the garden please telephone the school (9918 8811) and our office staff will pass on your name.

A parent committee manages our **Canteen** and **Uniform Store** and volunteers are warmly welcomed.

The P&C Committee host a New Parent Welcome to Barrenjoey Evening each year to enable new parents to meet other parents and to mingle with teachers and staff in an informal setting.

**P&C Committee for 2022 will be updated after November 24<sup>th</sup>. The current position holders are**

- President – Simon Bateson – [simon.bateson2@det.nsw.edu.au](mailto:simon.bateson2@det.nsw.edu.au)
- Treasurer: Cilla Cole
- Vice President: Christy Bishop & Flavia Julius
- Secretary: Nicky Inger and Sheridan Binns
- President of the Canteen & Uniform Store Committee: Di Cutrie and Kath Gunn

**The New Parents Welcome Evening will take place on Thursday 17 May 2022 at 5pm.**



# PROGRAMS

## Learning Support

The Learning and Student Support team at Barrenjoey consists of the Deputy Principal, Learning and Support Coordinator The Learning and Support Teachers, the School Counsellor and the School Learning Support Officers (Teacher's Aides). The aim of the Learning and Student Support team is to identify and support any students with additional learning needs and to work with staff and parents to allow all students to reach their full learning potential.

Assistance from the Learning Support team includes-

- Assistance to individual students experiencing literacy, numeracy, organisational, behavioural, physical or mental health concerns.
- Assisting teachers to program, teach and assess students who have a variety of learning needs.
- Transition programs to assist students with additional learning needs to transition smoothly from year 6 to 7, including the "Step Up" program.
- Homework Club, twice per week, before and after school to assist students with general homework and assessment tasks, staffed by the Learning and Support teacher and classroom teachers.
- Assisting students in accessing "Disability Provisions" for exams and other assessment tasks
- Completing the Federal Government's annual mandatory National Disability Data Collection.

Any parent who has concerns about their child's learning needs is always welcome to contact the school via the school's email address or the Teaching and Learning Support staff room on Extension 134.

Learning and Support Coordinator Mrs Michelle McKay  
Learning and Support Teacher Mrs Jane Smith

## Leap Into Maths

LEEP (Learning Enrichment and Extension Program) into MATHS is a program unique to Barrenjoey High School and has been designed to enhance Year 7-12 student performance in Mathematics. Participation in LEEP aims to create a positive change in attitude to Maths, improved self-esteem, extension and enrichment and confidence in approaching and succeeding in areas in which students may have previously experienced difficulties.

**There are 2 LEEP programs offered:**

**Program 1.** Extension and Enrichment for students of higher mathematical ability.

**Program 2.** Support and Enrichment for those students experiencing difficulties.

Programs 1 and 2 are run after school on a term by term basis (one lesson per fortnight) and incur a small cost for students of \$10 / term to cover snacks and drinks provided for the students.



## Peer Mediation

The Peer Mediation program is available to all students. Mediation is a successful way to resolve conflict and students who have a problem or conflict with another student can request Peer Mediation. The best person to see is the Year Advisor who will refer the matter to the Peer Mediation Coordinator. Mediation is voluntary and confidential and the mediators have been specifically trained to work with the students in the mediation session to find solutions. When a resolution is reached the students create a written agreement which is aimed at providing strategies to resolve any outstanding issues.

Mediation at Barrenjoey has a very high success rate and students who attend peer mediation report that they feel more confident about settling their own disputes.

## Peer Mentoring

Barrenjoey High School has a long-established and successful Peer Mentoring Program. The program involves Year 10 students acting as older "brothers" and "sisters" to the new Year 7 students to assist with their integration into the high school environment. The Peer Mentors are present on the first day of school to show the Year 7 students how to navigate their way around the school, introduce them to their teachers, help them read their timetables and assist them to settle in. During Term 1 the Peer Mentors organise "ice-breaker" activities where Year 7 students meet and interact with students other than their friendship groups.

The program derives from Peer Support Australia and benefits include:

- Providing students with a supportive learning environment in which to develop the skills, understandings, attitudes and strategies to improve mental wellbeing
- Developing key skills in resilience, assertiveness, decision making, problem solving and leadership
- Empowering young people to support each other and contribute positively to society

Some great friendships are made along the way, and the Year 10 students are often used as counsellors, friends, confidantes, team mates and fantastic role models. It is a very rewarding and valuable program which helps contribute to a safe and happy school environment.





## REPORTS

Reports on student progress and learning outcomes are issued to all students twice yearly. After the first report has been issued, parents have the opportunity to visit the school and talk to their child's teachers at a Parent/Teacher/Student Evening. Students are encouraged to attend these meetings (please note dates of these meetings under "Parent / Teacher / Student Evenings" in this booklet). Bookings are made online via the Parent Portal and you will receive an email in the week prior. At any time parents may also request a progress report by contacting their child's Year Advisor. All reports can be accessed through the Parent Portal shortly after students have been provided with their reports at school.

All students will attend an interview following the receipt of their Report. Students complete a reflection activity which assists in highlighting the trends in their reports and this forms the basis of the interview with their Year Advisor or a member of staff. This process is one of the methods we, at Barrenjoey, are using to promote the benefits of effort with the students.

## SPORT

Sport is a compulsory part of the curriculum. While Year 7 do sport as an integrated part of their normal school timetable, Years 8 - 10 participate in sport on Wednesday afternoons. Terms 1 & 4 are Recreational Sport terms and students are given the opportunity to choose their sport and in some cases a fee is required. Terms 2 & 3 are Team Sport terms and students have the opportunity to trial for a team sport to play against other schools in Warringah Zone (Pittwater High, Narrabeen Sports High, Manly Selective High and Cromer High) or play school based team sports at Hitchcock Park and Careel Bay.

In the event of wet weather or cancellation, all indoor sports continue and outdoor sport groups do alternate activities organised by their sports teachers.

## Sport Uniform

For safety and hygiene, all students must wear the sport/PE uniform to sport and PE lessons. For regular PE/sport lessons, students must change into their sport uniform at the start of the lesson and back into their school uniform at the end. The sport uniform is not to be worn to school unless it is sport day (Wednesday).

The sport/PE uniform is the same for girls and boys: a white Barrenjoey sport shirt with the school logo, red Barrenjoey PE shorts with "Barrenjoey" embroidered on the hem, and running shoes. The PE/sport uniform shirts and shorts are only available at the Uniform Store.

Please note: if for any reason PE uniform is unavailable for a PE lesson or sport afternoon (eg, it is dirty, wet or lost), students must bring their own shorts and shirt to participate in, along with a signed note from parents/carers.

The same consequences apply to students who do not have their PE uniform or alternate PE uniform as for students who are do not wear school uniform.



## CARNIVAL & GALA DAYS

The school holds three carnivals throughout the year; Swimming and Athletics (Term 1), both whole school events and Cross Country (Term 2), competitors only.

**Carnivals Dates for 2022 are: NB In red to be confirmed**

<b>SWIMMING</b>				
<b>Event</b>	<b>Venue</b>	<b>Date/s</b>	<b>Time 08</b>	<b>Week / Term</b>
School	Ku Ring Gai Fitness & Aquatic Centre	Thursday 24th Feb	9.00am–2.00pm	Week 5, Term 1
Warringah Zone	Warringah Aquatic Centre	Tuesday 8th March	8.30am-2.30pm	Week 7, Term 1
Sydney North	Homebush	Thursday 17th March	8.30am-2.30pm	Week 8, Term 1
CHS	Homebush Aquatic Centre	Weds 30 <sup>th</sup> , Thur 31st March, Fri 1st April	8.30am-2.30pm	Week 10, Term 1
<b>CROSS COUNTRY</b>				
School	Barrenjoey High	Friday 29th April	9.00am 3.10pm	Week 1, Term 2
Warringah Zone	Warringah Rugby Park	Friday 3rd June (back up date 6th June)	10.00am-2.00pm	Week 3, Term 2
Sydney North	Gosford Race Course	Thursday 16th June (back up date Friday 1st July)	9.00am 3.10pm	Week 8, Term 2
CHS (All School)	Eastern Creek	Friday 22nd July	9.00am 3.10pm	Week 1, Term 3
<b>ATHLETICS</b>				
School	NSW Academy of Sport	Wednesday 30th March	8.30am – 2.30pm	Week 10, Term 1
Warringah Zone	NSW Academy of Sport	Friday 27th May	8.30am – 3.00pm	Week 5, Term 2
Sydney North	Homebush	Monday 25th & Tuesday 26th July	8.30am – 3.00pm	Week 2, Term 3
CHS	Homebush	Wed 7th, Thur 8th & Fri 9th September	8.30am – 3.00pm	Week 8, Term 3
<b>GALA DAY</b>				
Year 7	Various	Monday 8th August	9.00am 3.10pm	Week 4, Term 3
Year 7 wet weather backup	Various	TBC	9.00am 3.10pm	

# STAFF

## PRINCIPAL – Mr Mark Robinson

The Principal has ultimate responsibility for the leadership and management of all aspects of the school.

Parents who would like an interview with the principal should contact the school for an appointment.



## DEPUTY PRINCIPALS Mr Jeff Brown and Ms Sarah James

The Deputy Principals are responsible for student welfare and discipline, curriculum, teacher professional learning and the organisational running of the school.

Ms James is responsible for years 8, 10 & 12 while Mr Brown is responsible for years 7, 9 & 11.

## Faculty Head Teachers

Head Teachers are responsible for the organisation of their subject areas. Any queries about levels of study, class placements or textbooks should be directed to them. In addition, Head Teachers support Year Advisors and monitor attendance.

<b>English</b>	Ms Kennedy	<b>Technology</b>	Ms Claridge
<b>Mathematics</b>	Mr Grunseit	<b>CAPA</b>	Ms Gudmunson
<b>Science</b>	Ms Driscoll	<b>PDHPE / Languages</b>	Ms Delamont
<b>HSIE</b>	Ms McEwan	<b>Teaching &amp; Learning</b>	Ms Blackman
<b>Wellbeing</b>	Ms Saunders	<b>Learning &amp; Engagement</b>	Ms Rose
<b>Learning Support</b>	Ms McKay		

## Year Advisors

Year Advisors assist students with their academic progress and social development and general wellbeing through their school life. Parents with any concerns regarding their child's progress at school should contact the Year Advisor in the first instance.

2022 YEAR ADVISORS		Assistant Year Advisor	EXECUTIVE SUPPORT TEACHER
<b>YEAR 7</b>	Mr Moylan	Ms Turik	Ms Claridge
<b>YEAR 8</b>	Ms Hutchinson	Ms Burn	Ms Driscoll
<b>YEAR 9</b>	Ms Dickinson	Ms Attard	Mr Grunseit
<b>YEAR 10</b>	Ms Claire	Mr Mason	Ms Gudmunson
<b>YEAR 11</b>	Ms Clark	Ms Frost	Ms Kennedy
<b>YEAR 12</b>	Ms Bubalo	Ms Ferry	Ms McEwan



## SCHOOL COUNSELLOR – Ms Cook and Mr Comans

Teachers, parents, health and welfare services or students themselves refer students to the School Counsellor. The School Counsellor is concerned with psychological welfare, diagnosis of educational problems, programs of remediation and adjustment problems. Parents are welcome to make an appointment by telephoning the school – 9918 8811. Ms Cook is at school on Mondays and Tuesdays and Mr Comans is at school on Wednesdays, Thursdays and Fridays.

## CAREERS ADVISOR – Mr Moylan

The Careers Advisor is available to all students but particularly to Years 9-12. Year 10 have timetabled careers lessons and new Year 10 students need to check with the Careers Advisor for information about work experience and the annual careers market.

The Careers Advisor gives help to students and parents on subject selection, post school studies and career path planning. Senior students can book individual interviews to discuss their program of study or future education, training and employment goals.

For updated weekly information please visit the Barrenjoey Careers website <http://www.barrenjoeyhighschoolcareers.com/?page=newsletter>



## STUDENT REPRESENTATIVE COUNCIL (SRC)

The Student Representative Council (SRC) is an inclusive body of self-nominated student leaders from Years 7-12. The major role of the SRC is to provide a student voice while promoting Barrenjoey's motto of Respect, Effort and Challenge. SRC members attend weekly meetings, provide outlets for students to raise issues of interest or concern for the student body, participate in mixed-year teams to progress SRC-specific initiatives, demonstrate school spirit at school carnivals and Working Bees, and run events including fundraising activities to support the school and the community. The School Captains and Vice Captains are elected from the Senior Leaders (the Year 12 SRC students).

SRC members work as a cooperative team to develop a range of initiatives that enhance and promote the best interests of Barrenjoey students and the wider community. A fantastic initiative from 2019 was the establishment of a separate environment-focused group called EcoJoey. This student body has already helped to make the school canteen and cafe more environmentally friendly. The SRC and EcoJoey continue to work together to progress more recycling initiatives at the school.

Despite the interruptions in 2020 and 2021, the SRC raised over \$5,000 towards our environmental program and established a Chess Club. The SRC also began to run regular handball competitions open to students and staff, providing a great opportunity for everyone to gather and compete together. For 2022, the SRC is planning to build stronger connections with local charities, adopt animals from Taronga Zoo and expand on social justice programs for Barrenjoey students, as well as continue to build student engagement within the school with fun activities such as lunchtime sports tournaments and other games.

Student leadership and citizenship is a major focus at BHS. SRC members develop strong leadership skills through training initiatives and hands-on experience. They are supported to seek out and take on further leadership opportunities such as the Rotary Youth Program of Enrichment Leadership Camps and participation in the Avalon Youth Hub Youth Advisory Group. As representatives, students have worked with the Peninsula Community of Schools on a range of special events, worked with Pittwater Council to advise local government on youth issues, and represented the school at a range of events such as the NSW Children's Parliament and Global Dignity Day at Parliament House, the Global Leadership Conference in Beijing, and ANZAC Day and Remembrance Day ceremonies.

# 2022 SENIOR LEADERS

## Captains

William Cassell and Hannah Pepper

## Vice Captains

Annabel Bates and Isabella Vincent

## Senior Leaders

Cody Allan

Angela Carter

Madeleine Colman

Jasmine Gibson

Mia Jell

Tyler Schaafsma

Bayley Taylor

Nima Truman

Harry Young



# TRAVEL

## Bicycle

Parents have a primary role in relation to bicycle safety. It is vital that parents make sure that the bicycles their children ride are road worthy and that the children are provided with approved safety helmets. Students should lock their bikes in the school bike racks provided near C Block if they wish to ride to school.

Students are encouraged to take care when riding to and from school especially along the main roads and not to ride their bicycle if they do not have a helmet. Students **must not** ride their bikes on school grounds.

## Bus, Ferry & Cars

### Opal Cards

Application for the School Opal card can be found at [www.transportnsw.info/school-students](http://www.transportnsw.info/school-students). Please complete the form online. The School Opal card gives eligible students free travel to and from school on school days.

Students with current Opal cards will not need to re apply unless they are starting school for the first time, changing schools, campus, their home address or moving from Year 6 to 7.

Barrenjoey students are frequently praised by bus companies, the ferry crew and members of the public for their excellent behaviour when travelling. It is very important that our good reputation is maintained and that, at all times, Barrenjoey students travelling on buses or the ferry should display proper conduct and sit quietly in the interest of safety and the comfort of other travellers.

Misbehaviour or problems on buses or ferries will be dealt with by the relevant company, which will liaise with the school. Bus and ferry passes are issued to every student who qualifies, however, they can be withdrawn for unsatisfactory behaviour.

### FERRY

Any travel by ferry can collect an application form from the Front Office at the School. Palm Beach Ferries <http://www.palmbeachferries.com.au/ferry-timetable/>

### CARS

Students' and Parents' cars must be parked outside the school grounds.





# UNIFORM

## Description of Uniform

### Junior Uniform Years 7, 8 & 9

### Senior Uniform Years 10, 11 & 12

Barrenjoey allows students to wear any of the uniform below regardless of gender, however the Barrenjoey Uniform can only be purchased from the Uniform Store and not substituted with alternative clothing. All permutations must be worn together.

Barrenjoey will continue to notify parents of incorrect school uniform and consequences will be issued for non-compliance. If your child is unable to wear some part of the school uniform please provide them with a note. They then need to see a Deputy before school. The Deputy will then issue a uniform pass to your child for the day.

The Uniform Store is open Monday 2.30 – 4.30 pm, Wed 3.30 – 5.30 pm and Thursday 8.30 – 10.30 am. All school uniform items are available along with a limited number of second hand garments. The uniform store manager is Virginia Upton and she can be contacted on [bhsuniformstore@gmail.com](mailto:bhsuniformstore@gmail.com)

If you need to have a conversation regarding any financial difficulty you may be facing with purchasing the uniform please contact the Deputy Principals, Sarah James or Jeff Brown, to discuss your options.



#### Years 7, 8 & 9

**Navy** cargo pants / short or long  
White polo shirt with school badge  
Junior Tartan skirt  
White blouse with **red** piping on collar  
White or **Black** socks or black tights  
**Navy** sloppy joe with embroidered *Barrenjoey*

#### Years 10, 11 & 12

**Black** cargo pants / short or long  
White short-sleeved business shirt with *Barrenjoey* embroidered on the pocket  
Senior Tartan skirt  
White blouse with **black** piping on sleeves  
White or **black** socks or black tights

#### PE / Sport Uniform

**Red** shorts with *Barrenjoey* embroidered on the leg  
White polo shirt with school badge  
White or **black** socks & joggers

#### Jackets

Year 7 & 8 wear **Navy** all weather jackets with *Barrenjoey* embroidery  
Years 9 & 10 wear **black** all weather jackets with *Barrenjoey* embroidery  
Years 11 & 12 wear **personalised** Senior Jackets or **black** all weather jackets with *Barrenjoey* embroidery

# Uniform Policy & Procedure

Students at Barrenjoey High School wear a uniform that has been developed and endorsed by a team of parents, students and staff.

## a) Shoes

The Department of Education stipulates in the policy "School Uniforms in NSW Government Schools" 2004 that under Work Health and Safety laws, schools must ensure that students are not exposed to health or safety risks while they are on Department premises. The school has a duty to implement a uniform policy that ensures students wear appropriate footwear to school.

Below is a description of shoes that are acceptable at Barrenjoey High School. Only shoes that are black leather and fully enclosed at the heel and toe are to be worn to school.



Dunlop Volleys  
(Canvas)



	BLACK	LEATHER	ENCLOSED	SECURE	ACCEPTABLE
	✓	X	✓	✓	X
	X	✓	✓	✓	X
	✓	✓	X	X	X
	✓	✓	✓	✓	✓
	✓	✓	✓	✓	✓
	✓	✓	X	✓	X
	✓	✓	✓	✓	✓

## b) Boys' pants

Boys are required to wear the Barrenjoey school pants which are purchased at the uniform store. Other blue or black pants are not permissible.

## c) Jumpers/Jackets

There are a number of Barrenjoey jumpers and jackets available at the uniform store. Other jumpers and jackets are not permissible. Hoodies are not to be worn at school.

## d) Practical lessons

During practical lessons correct protective clothing must be worn e.g apron and eye protection, leather, fully enclosed shoes. These are Work Health and Safety requirements of the Department of Education. Students who do not have appropriate protective clothing will be excluded from the lesson or activity and as such may not satisfy the course requirements.

## Unavoidable Out Of Uniform

Occasionally situations arise where students cannot wear correct uniform for a short period of time – for example, due to damaged or lost items. In this instance, students should see a Deputy Principal before 9am with a note from a parent to receive a yellow uniform pass.

The Uniform Store (located in A block) is open each week. Please see the Uniform Store information for opening hours. During holidays and early in the term extended opening hours may apply.



## OTHER INFORMATION

### Homework

Regular and effective home study is essential for success at high school. Home study includes homework, revision and additional reading and research on the topics being addressed at school. Students must plan their home study to include continuous revision and preparation for examinations. For most school days students will have some form of homework or preparation. Parents are asked to help ensure that this work is carried out, as failure to do so will affect the progress of their child.

As a general guide students should study five nights per week and minimum study times for the average student should be:

Year 7 & 8	45mins - 1 hour per night
Year 9 & 10	1 hour per night
Year 11 & 12	2 hours per night

Year 11 and 12 students should also do additional hours on the weekend and continue a regular study program during all school holidays. Parents of students who consistently fail to complete homework will be notified and if improvement is not evident the student may be placed on a discipline level.



### Homework Club

Homework Club is available to all students, where they can do their homework with the aid of teachers, before and after school.

Homework club in 2022 will run on Monday afternoons from 3:15 to 4:15pm in the Senior Study in the Learning Hub, and on Thursday mornings from 8:15 to 9am in Top Deck. If you have any questions please contact Ms Smith or Mr Menton in the Learning Hub.



## Lost Property

Students are expected to look after their own property and to respect the property of the school and other students. Lost property should be reported and found property should be handed in immediately to the Front Office. Valuables or large sums of money should not be brought to school or should be handed in to the Front Office for safekeeping. All property should be clearly engraved or labelled for easy identification. Never leave valuables unattended in your bag outside classrooms, the Learning Hub or in the playground



## BRING YOUR OWN DEVICE (BYOD)

Bring Your Own Device (BYOD) program is being implemented across many Dept of Ed. schools across the state. The BYOD program recognises that technology and choices about technology are very much personal and acknowledges technology in education means more than meeting specific curriculum requirements. BYOD is designed to give freedom to make technology choices that suit you and all your circumstances.

Barrenjoey has successfully implemented a BYOD model to support the teaching and learning needs of our students and our school.

There are specifications that need to be met in order to make the devices useful in the classroom, e.g. for a device to have access to the school's network there is a minimum standard for device connectivity.

There are a significant range of devices that are on the market that will meet a range of budgets and purposes. Some of the current generation of devices however don't meet the crucial component of the BYOD experience - connectivity to the internet.

### Wireless Capability

Every public high school in NSW has been equipped with a robust and centrally managed wireless network to allow staff and students to connect. The DEC wireless network installed in high schools only operates on the 802.11n 5Ghz standard. **Make sure it supports both "a" and "n".**

- Devices with 802.11a/b/g or 802.11n 2.4Ghz only will not be able to connect.
- **We recommend purchasing new devices or cards with 802.11ac, dual-band wireless cards. This is only a desirable requirement.**

Recommended devices for use at school include PC Laptops, Notebooks and Ultrabooks as well as Apple Macbook products. With the introduction of Google Apps to Barrenjoey, students will also be able to use a Chromebook device at School. These devices retail from \$300. Again we recommend purchasing new devices or cards with 802.11ac, dual-band wireless cards. This is only a desirable requirement. For more information regarding BYOD, Free Software for NSW DE Students and IT Network support please go to our website



<http://www.barrenjoeyhighschool.com.au/about-us/information-technology/>

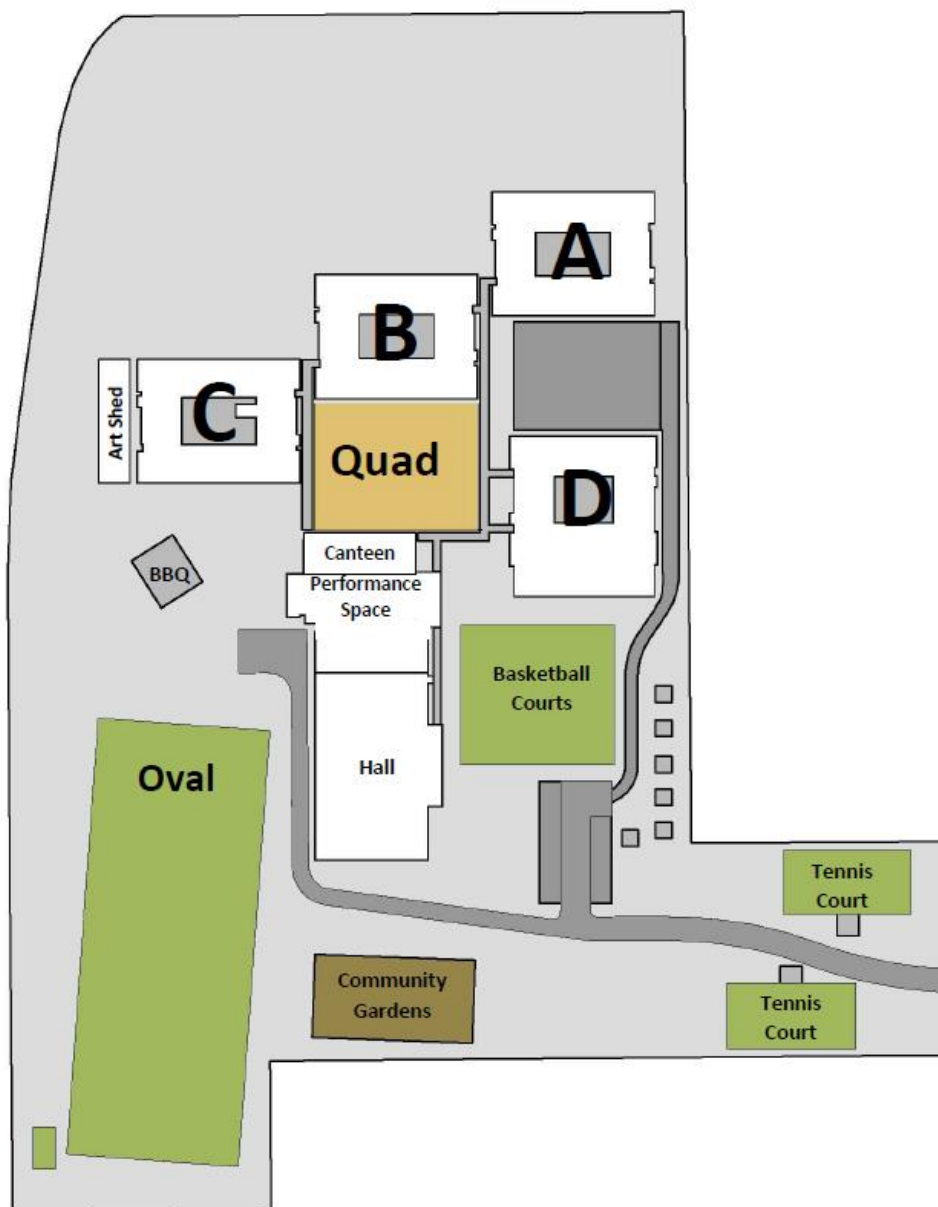
# SCHOOL MAP

**Out of bounds areas** before and after school at recess and lunchtime:

- car parks
- western side of C block
- driveways
- tennis courts
- 

Community Garden and surrounding hill

From time to time other areas are declared out of bounds, e.g. the Hall area during exams.



# Mobile Phone Policy

The School recognises that there are times when it is genuinely appropriate and useful for students to have access to a mobile phone or similar electronic device - for example, to contact parents in emergencies or to confirm or change a collection time after school. It is not necessary, nor acceptable, however, for mobile phones to be switched on or used during lessons.

A debate exists surrounding the usefulness of mobile technology in the learning environment versus the distractions they pose to the user when used inappropriately. Barrenjoey seeks to incorporate a balanced view for mobile phone use while engaged in school and school-based activities.

The following 'common sense' rules apply with respect to mobile phones:

- Courtesy, consideration of and respect for others are paramount at all times.
- They are brought to and kept at school, and used entirely at the owner's risk. The School cannot accept any responsibility for theft, loss, damage or health effects (potential or actual) resulting from mobile phone use. Students and parents should recognise that mobile phones are a highly prized target for theft and accordingly, phones should always be stored in a safe and secure place when not in the classroom.
- Parents and students are asked to respect the learning environment. Mobile phones must be switched off during lessons, private study times, during examinations and when they are stored in a locker. They should not be used in any manner or place that is disruptive to the normal routines of the School or to other people. This includes the sending and receiving of text messages or data.
- When in a classroom or learning environment students are required to store their (switched off) mobile phone at the front of the room in a purpose made storage device to minimise disruption to the learning environment.
- These guidelines may also refer to the use of mobile phones during field trips, detentions, excursions or other supervised activities.
- The following consequences apply to policy breaches:
- Confiscation of the mobile phone by the teacher for the remainder of the day. The student (and phone) is sent to the front office. The Front Office staff will secure the phone and the student's name will be recorded. The phone/device will be signed out to the student at the end of the school day.
- Should the student incur a second phone confiscation, the Deputy Principal will contact the parent.
- More serious offences will be managed under the Barrenjoey Wellbeing Policy.





## Student & Parent Portals

The Student and Parent Portals provide both parents and students discreet information about each student's progress in our school.

The school will send an email to parents with links and information on how to register for access to the Parent Portal. If you do not receive this email please contact the school to have the email sent to you.

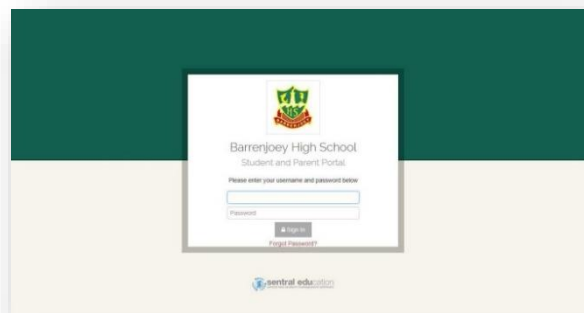
Students will be shown how to access their portal in class.

The Parent Portal allows parents to:

- view school reports
- book "Parent / Teacher / Student Evenings"
- view your child's timetable
- access School Assessment Schedules and Tasks

The Parent Portal is an important tool in the day to day management of your child's enrolment at Barrenjoey.

Should you experience difficulties please do not hesitate to contact the school for assistance.



## Photographs

Photographs and videos of students are used for a variety of information and promotional material such as newsletters, publications, brochures, Barrenjoey's website and advertisements. Parents provide permission upon enrolment at Barrenjoey via the enrolment form.

A school photographer takes individual, year group and other group photographs every year. Students can order photograph packages. Parents will be notified of the school photograph day and information about costs for the photo packages is distributed to the students before the photo day.

## Special Religious Education (SRE)

Parents/caregivers in public schools have the right to have their children receive instruction in their preferred religious persuasion, where authorised teachers of that persuasion are available.

A special religious education program is available at the school and is run by authorised volunteers of approved religious persuasions. Below is the list of approved special religious education programs provided at the school for 2022. A link from each provider is listed to access information regarding the provider's curriculum scope and sequence.

OPTIONS Option 1: [Catholic SRE](#) Option 2: [Anglican SRE](#)

Students not attending SRE will be provided with supervised alternative activities. This could include reading, private study or completing homework.

Students continue in the same arrangement each year, unless a parent/caregiver has requested a change in writing. At any time, parents/caregivers have the right to change the SRE nomination or to withdraw their child from the nominated lessons. A note to the Deputy Principal will affect this change.

## Textbooks

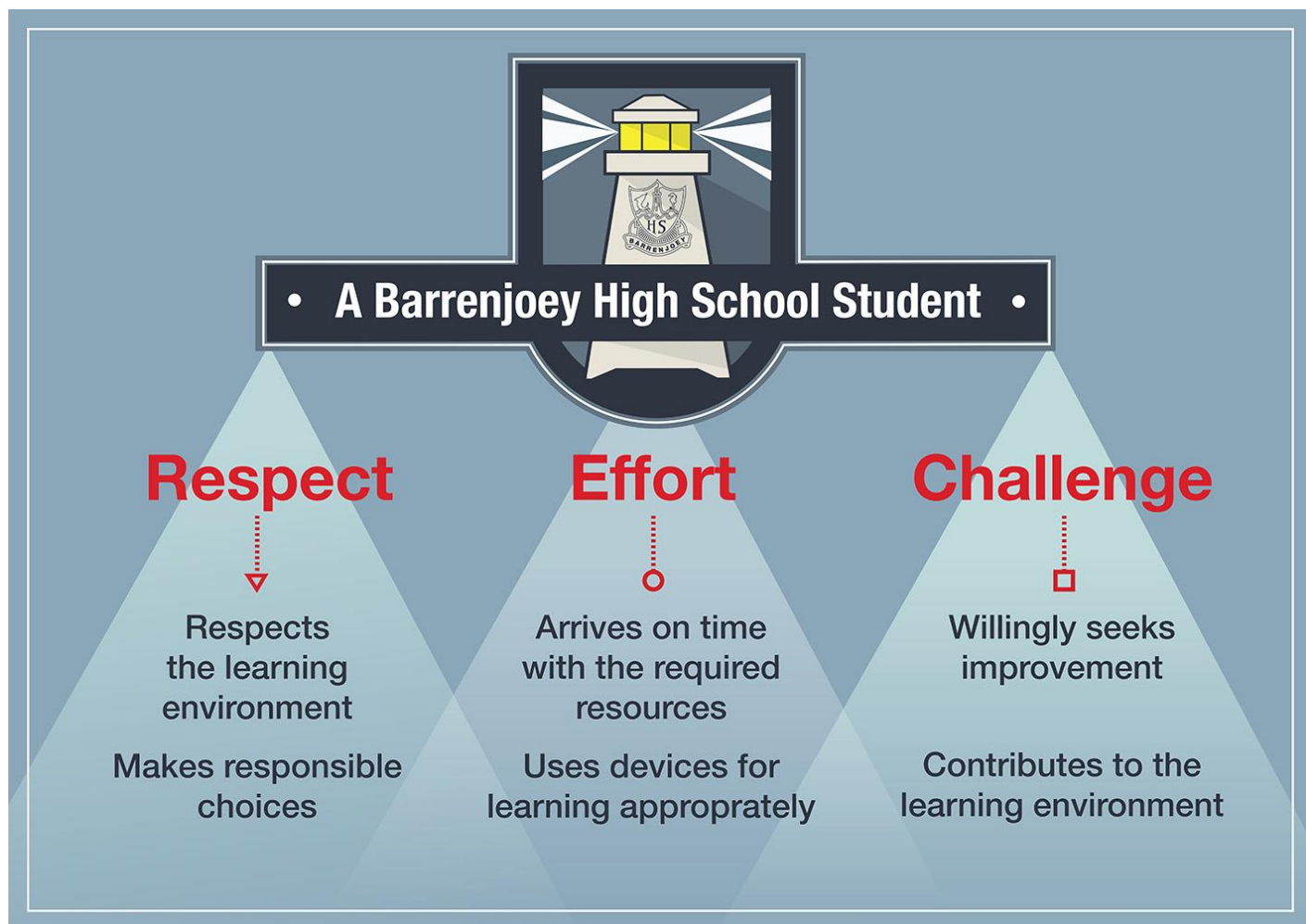
Textbooks required for courses are issued on loan and must be cared for and returned on request. The student must provide exercise books and other requisites for subjects. Students are responsible for bringing the correct books to school for their lessons each day. A Book Pack which provides all stationery needs is available for Years 7 & 8.

# WELLBEING AT BARRENJOEY

At Barrenjoey High School we take pride in our unique and highly supportive school ethos. We employ the Positive Behaviour for Learning (PBL) model which is an evidence-based whole school process to improve learning outcomes for all students by promoting explicit positive behaviours. *Respect, Effort, Challenge*, our adaption of PBL, is embedded into every aspect of our school community.

An essential part of student wellbeing is discipline and our PBL philosophy adopts a preventative approach. We promote self-discipline and personal responsibility in our students and provide a clear set of consequences for students who do not respect the rights of other students to learn in a safe and supportive environment.

Student welfare is of the highest priority both inside and outside the classroom. We want our students to develop resilience, a sense of identity and belonging and to graduate from Barrenjoey as confident, empathetic and responsible citizens.



# BARRENJOEY WELLBEING TEAM

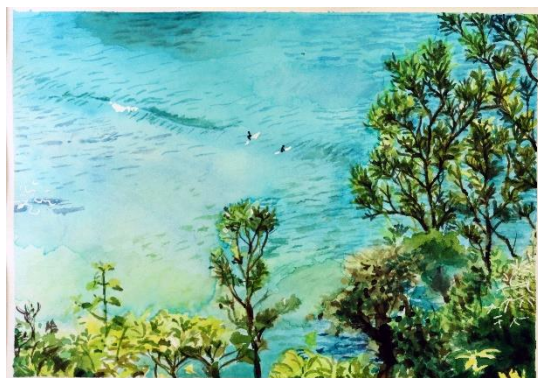
Student wellbeing is the responsibility of all staff at Barrenjoey High School. In addition, a wellbeing team operates to focus specifically on providing a safe and supportive environment for all our students.

The wellbeing team consists of the following members:

- Head Teacher Wellbeing
- Year Advisors and Assistant year Advisors
- Deputy Principals
- Head Teachers of year group
- School Counsellors
- Learning and Support Teacher
- Home School Liaison Officer
- Anti-Discrimination/Anti-Racism Officer
- Youth Worker

## Head Teacher Wellbeing

- Lead the Wellbeing team in the school
- Chair, attend and minute wellbeing meetings and liaise with team to case manage specific students, particularly those with significant welfare issues
- Initiate professional learning opportunities for wellbeing team and whole staff through staff development days and other learning opportunities including once per term whole wellbeing team
- Assist Year Advisor in initiating and running whole year welfare programs in the areas of social resilience (Years 7 & 8), positive choices (Years 9 & 10) and academic resilience (Years 11 & 12).
- Manage the BHS Merit system
- Case manage students on Level 1 support
- Develop and oversee management systems for wellbeing, particularly the use of Sentral



## Year Advisors and Assistant Year Advisors

- Oversee, monitor and support their year group from transition year 6-7 to the end of year 12.
- Staff report welfare concerns to YA in the first instance (except for mandatory reporting issues)
- Generate progress reports where necessary and work with team for remedial action
- Organise camps and other specific welfare programs
- Act as the first port of call for parents with any enquiries or concerns regarding their child's welfare
- Assist with social and ceremonial activities such as graduations, awards presentations and on line year group communications such as Facebook.
- Provide induction to new students each year
- Attend welfare meetings and work with team to address specific welfare needs of particular students.
- Work with the Timetabler to arrange classes in transitioning each year.

## Deputy Principals

- Look after 3 year groups each (8,10,12 and 7,9,11).
- Case manage students with behavioural and attendance issues (usually on behavioural support level level 2 or 3) through meetings with students, parents, and outside agencies such as medical professionals.



### Head Teachers Year Group

- Support Year Advisors in all their activities from transition 6-7 to end of year 12
- Attend all year meetings and ensure teaching staff assigned to year group attend as needed.
- Attend all camps and other year activities with a particular focus on providing disciplinary support, leaving the YA to focus on welfare.
- Work with the welfare team to case manage particular students in the areas of uniform, attendance and behaviour, including liaising with parents and overseeing students on support level 1.

### School Counsellor

- Work with wellbeing team to support individual students
- Develop proactive wellbeing initiatives to address identified issues in the school
- Provide professional learning on welfare issues to the wellbeing team and whole staff
- Liaise with external agencies in the identification and support of individual students
- Work as a conduit between the wellbeing and learning support teams
- Coordinate the annual NCCD process

### Learning and Support Teacher

- Attend wellbeing meetings and act as a conduit between the wellbeing and learning support teams
- Work with the wellbeing team to assist identified students with welfare related learning support such as disorganisation and anxiety
- Support students in applying for and managing disability provisions for the HSC

### Home School Liaison Officer

- Act as external liaison for school in case managing students with attendance issues
- Attend wellbeing meetings to update team on ongoing cases and provide general advice about non-school pathways for students
- Assist the school in the development of attendance policies

### Anti Discrimination / Anti Racism Officer

- Hear complaints from students and staff regarding discrimination.
- Facilitate identified written complaints on the appropriate paperwork.
- Attempt to resolve these complaints and/or give appropriate advice on action which can be taken.
- Pass on written complaints, if deemed necessary, to the appropriate person eg DP
- Help develop an anti-discrimination ethos in the school by receiving relevant anti-discrimination material and distributing it amongst staff members for use and understanding.

### Youth Worker

- Runs small support groups
- One-on-one student support
- Liaison with external agencies
- Referrals to external agencies



# BARRENJOEY WELLBEING PROGRAM

Barrenjoey adopts a learning stage approach to developing student's social, emotional and academic wellbeing.

## Stage 4: Social Resilience

*Focuses on developing student social and emotional intelligence, conflict resolution and positive self-esteem.*

## Stage 5: Positive Choices

*Focuses on developing student awareness of the choices available to them and the implications of poor life choices. Encourages students to be proactive, safe and empathetic citizens.*

## Stage 6: Academic Resilience and Success

*Focuses on equipping students with the skills and knowledge to be engaged, independent and successful learners who can manage life's ups and downs.*

## MERIT SYSTEM

At Barrenjoey High School we are proud of the achievements, participation and efforts of our students. Our merit system acknowledges students' accomplishments across all fields of endeavour and encourages improvement and sustained application.

The Barrenjoey High School Merit System is a cumulative process throughout one academic year and recognises achievement at a number of levels, allowing all students to experience acknowledgment of success.

### Bronze Merit

Teachers reward students who display core Barrenjoey values of *Respect, Effort, Challenge* with positive entries on our welfare system, Sentral. These may be given for:

- Active participation in class
- Improved effort and application in course work
- Outstanding effort in an assessment or homework task
- Excellent achievement in school and community pursuits
- Compliance with school rules and teacher direction
- Positive interactions with students and teachers
- The wearing of exemplary school uniform
- Regular attendance

Once students have collected 15 of these positive entries, they are presented with a Bronze Merit certificate and a letter will be sent home to congratulate them and their parents.

### Silver Merit

Silver Merit Awards are awarded to students who gain a total of 30 positive welfare entries. When students attain this award a letter will be sent home to congratulate the students and their parents. The Silver Merit will be presented by their Year Advisor and/or supervising Head Teacher at a year group meeting.

### Gold Merit

Gold Merits are awarded to students who gain a total of 45 positive welfare entries in one academic year. When students attain this award a letter will be sent home to congratulate the students and their parents. The Gold Merit will be presented by a Deputy Principal and/or Principal at a Formal School Assembly.

### Barrenjoey High School Gold Medal

Barrenjoey High School Gold Medals are awarded to students who achieve Gold Merit and complete their required number of REC Service Hours (see below). This award will be presented at Achievement Night by the Principal.

### Barrenjoey High School REC Trophy and Honour Board

Any student who gains a Barrenjoey High School Gold Medal for every year of their time at Barrenjoey High School will receive a Barrenjoey High School REC Trophy at Year 12 Graduation, presented by the Principal and/or distinguished guests, and will have their name recorded on the Barrenjoey High School REC Honour Board.

### REC Service Hours

Students who wish to attain a Barrenjoey High School Gold Medal need to complete 8 service hours each year.

Service hours are those spent working for the benefit of the school or community *that do not have another value or award attached to it.*

*Examples of Service Hours could include:*

- Participation in school working bees
- Producing work for or selling at the Barrenjoey Fete or representing Barrenjoey at other local fetes
- Volunteer Work and Fundraisers
- Representing Barrenjoey in the community for sport, arts, music or other pursuits
- Volunteer involvement in school events such as serving food to parents at Student Parent Teacher Evening or taking school tours on Open Night
- Acting as a reader/writer for other students sitting exams

Students must take responsibility for recording their hours of service in their REC Service Hours booklet and ensuring a supervising teacher signs off.

The following chart summarises the process:







# BARRENJOEY HIGH SCHOOL

## RESPECT EFFORT CHALLENGE

Ph: 9918 8811  
Fx: 9973 1682  
Address: Coonanga Road, Avalon Beach NSW 2107  
Web: [barrenjoeyhighschool.com.au](http://barrenjoeyhighschool.com.au)  
Email: [barrenjoey-h.school@det.nsw.edu.au](mailto:barrenjoey-h.school@det.nsw.edu.au)